

DIMENSIONS & REINFORCING STEEL ARE TYPICAL FOR EACH COLUMN & DRILLED PIER UNLESS OTHERWISE NOTED.

DRAWN BY : G.DWIGHT LOFLIN DATE : 07-2025  
 CHECKED BY : LOGAN C. YARBROUGH DATE : 07-2025  
 DESIGN ENGINEER OF RECORD: LOGAN C. YARBROUGH DATE : 08-2025

**DOCUMENT NOT CONSIDERED FINAL  
UNLESS ALL SIGNATURES COMPLETED**

8/8/2025  
c:\pw\_working\drmp01\dms69029\401\_041\_HB0030\_SMU\_B1\_S-21\_550055.dgn  
DLoflin



**DRMP**

8210 UNIVERSITY EXECUTIVE  
PARK DRIVE SUITE 220,  
CHARLOTTE, NC 28262  
(704) 549-4260

NC LICENSE NO. F-1524



## NOTES

STIRRUPS IN CAP MAY BE SHIFTED AS NECESSARY  
TO CLEAR DOWELS.

HOOKS ON "V" BARS MAY BE TURNED AS NECESSARY  
FOR PLACING REINFORCING STEEL.

FOR DRILLED PIERS, SEE SECTION 411 OF THE STANDARD SPECIFICATIONS.

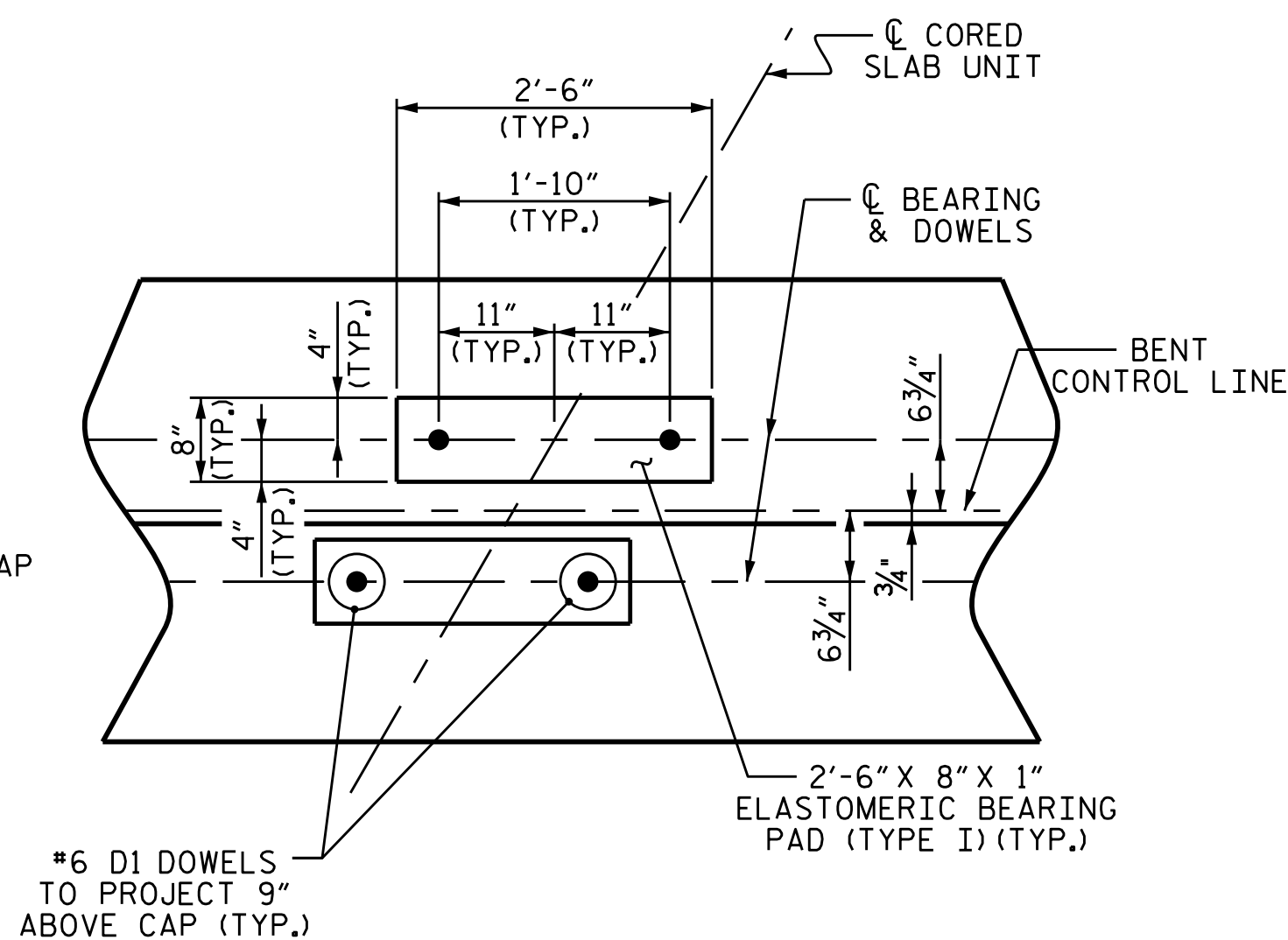
ALL STEEL IN THE DRILLED PIERS IS INCLUDED IN THE  
PAY ITEMS FOR "REINFORCING STEEL" AND "SPIRAL  
COLUMN REINFORCING STEEL."

★ INVERT ALTERNATE STIRRUPS.

THE LOCATION OF THE CONSTRUCTION JOINT IN THE DRILLED PIERS IS BASED ON AN APPROXIMATE GROUND LINE ELEVATION. IF THE CONSTRUCTION JOINT IS ABOVE THE ACTUAL GROUND LINE ELEVATION, THE CONTRACTOR SHALL PLACE THE CONSTRUCTION JOINT ONE FOOT BELOW THE GROUND LINE.

DRILLED PIERS SHALL BE TERMINATED ONE FOOT  $\pm$  ABOVE  
NORMAL WATER SURFACE ELEVATION FOR SHAFTS LOCATED  
IN WATER.

THE CONTRACTOR'S ATTENTION IS CALLED TO THE FACT THAT THE LONGITUDINAL REINFORCEMENT FOR DRILLED PIERS IS DETAILED WITH 3 FEET OF EXTRA LENGTH.



DETAIL "A"

---

(DIMENSIONS ARE TYPICAL EACH BEARING)

PROJECT NO. HB-0030

MACON COUNTY

STATION: 16+10.49 -L-

SHEET 1 OF 4

STATE OF NORTH CAROLINA  
DEPARTMENT OF TRANSPORTATION  
RALEIGH

SUBSTRUCTURE  
BENT 1

REVISIONS						SHEET NO.
NO.	BY:	DATE:	NO.	BY:	DATE:	S-21
1			3			TOTAL SHEETS 26
2			4			

DRMP JOB NUMBER: 20-0464.031

STD. NO. DP BT 33 60S <50'